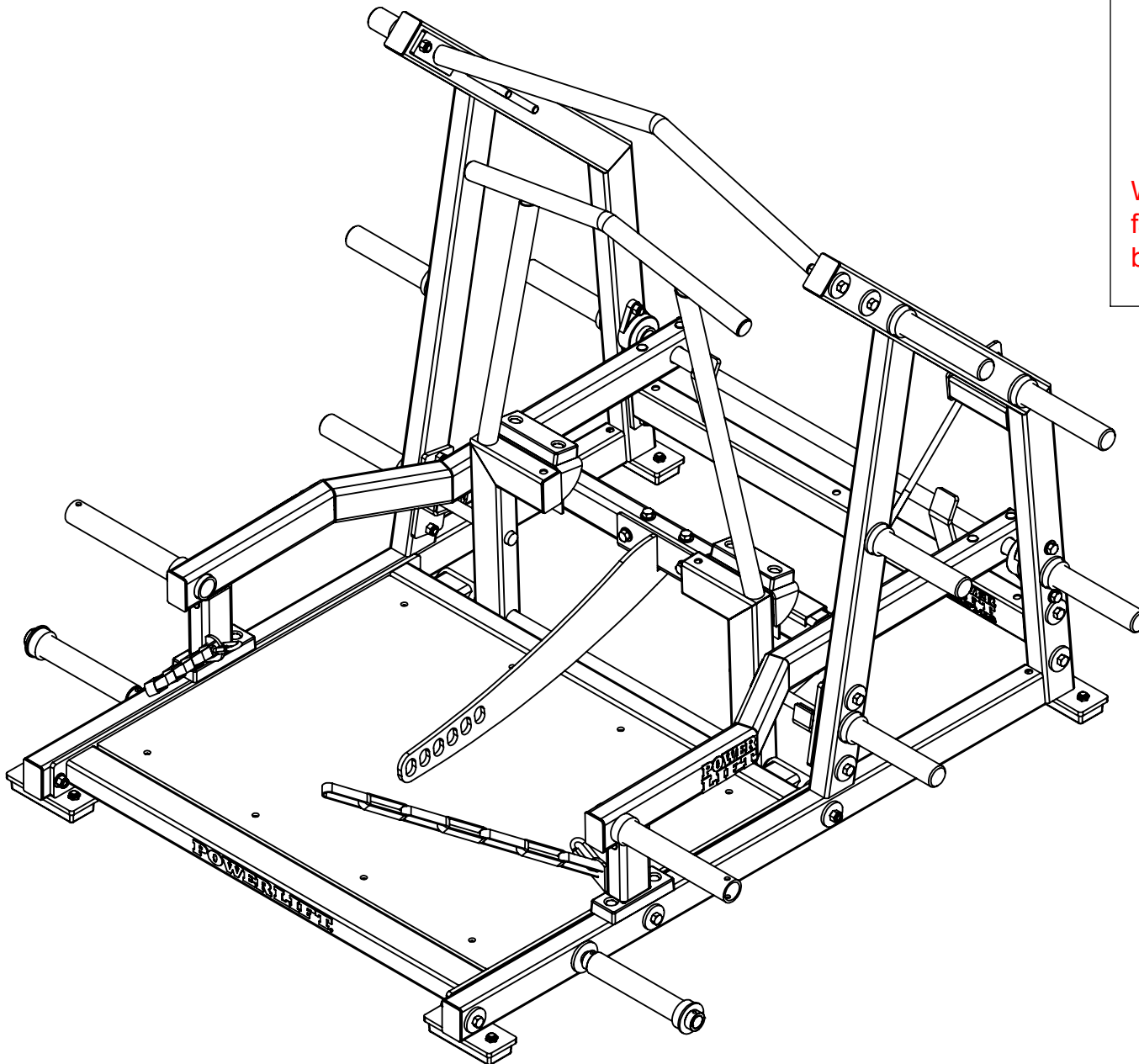


Belt Squat



Assembly notes:

Fasteners provided to assemble machine:
(26) 1/2"-3 1/4" Bolts

Tools required (Not Included):

- 3/4" Open-End Wrench
- 3/4" Socket
- 1/2" Open-End Wrench
- 1/8" Allen Wrench
- 13 mm Open-End Wrench

When assembling unit **DO NOT** tighten any fasteners until all components have been bolted together.

POWER LIFT ®

PART NUMBER

71000D assembly cover

THE INFORMATION CONTAINED IN THIS DRAWING IS THE SOLE PROPERTY OF POWER LIFT ANY REPRODUCTION IN PART OR WHOLE WITHOUT THE WRITTEN PERMISSION OF POWER LIFT IS PROHIBITED

REV.

Date

Instructions

- 1.) Assemble items 6, 12, and 20 using (6) 1/2"X3-1/4" bolts provided.
- 2.) Assemble items 2 to both 12, and 20 using (4) 1/2"X3-1/4" bolts provided.

Note: When assembling unit **DO NOT** tighten any fasteners until all components have been bolted together.

Hardware Detail

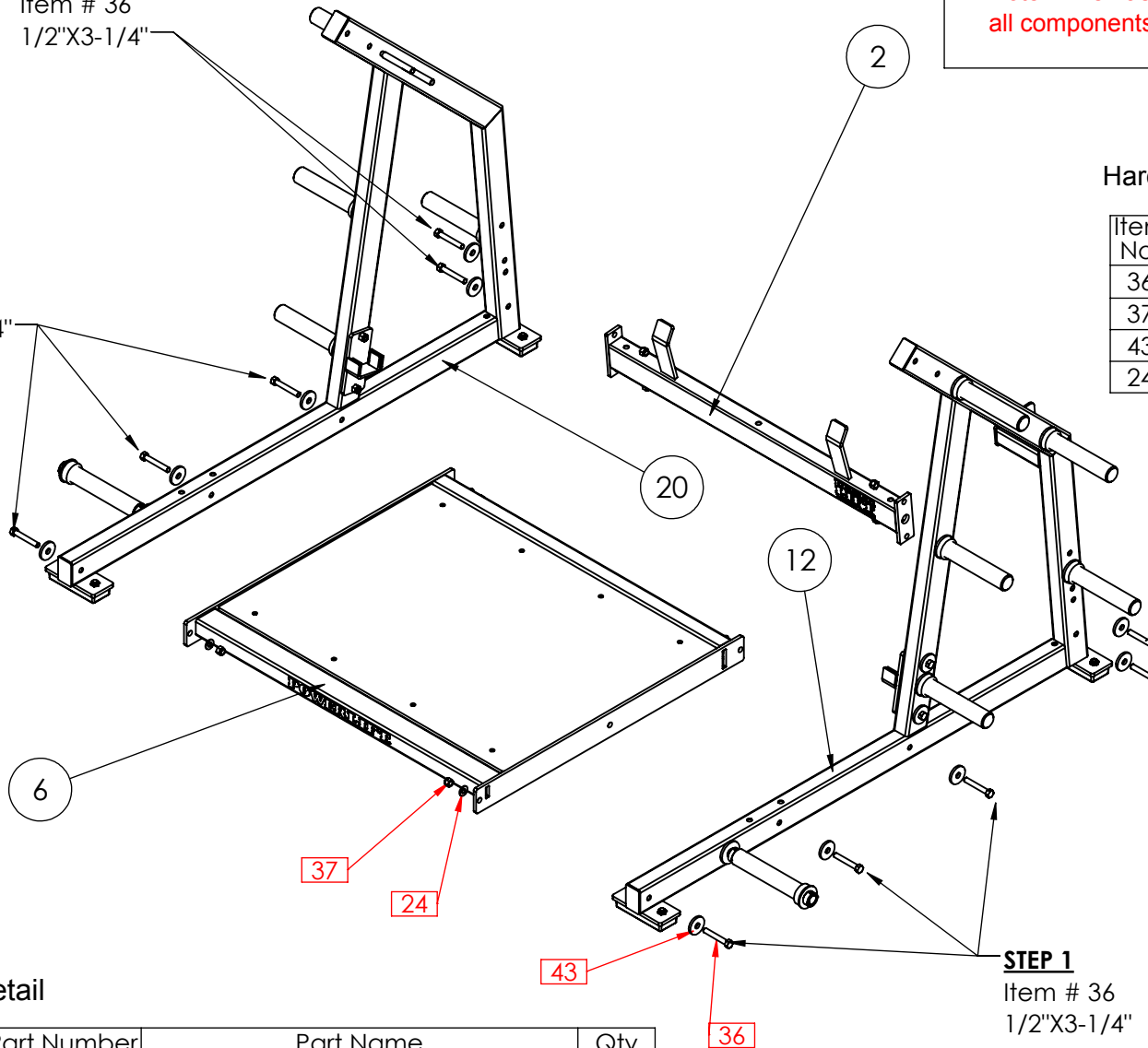
Item No.	Part Number	Part Name	Qty
36	99648	1/2"X3-1/4" BOLT	10
37	99620	1/2"-13 NUT	10
43	80010	PLATE, SPACER	10
24	99585	1/2" FLATWASHER	4

STEP 2
Item # 36
1/2"X3-1/4"

STEP 1
Item # 36
1/2"X3-1/4"

STEP 2
Item # 36
1/2"X3-1/4"

STEP 1
Item # 36
1/2"X3-1/4"



Frame Detail

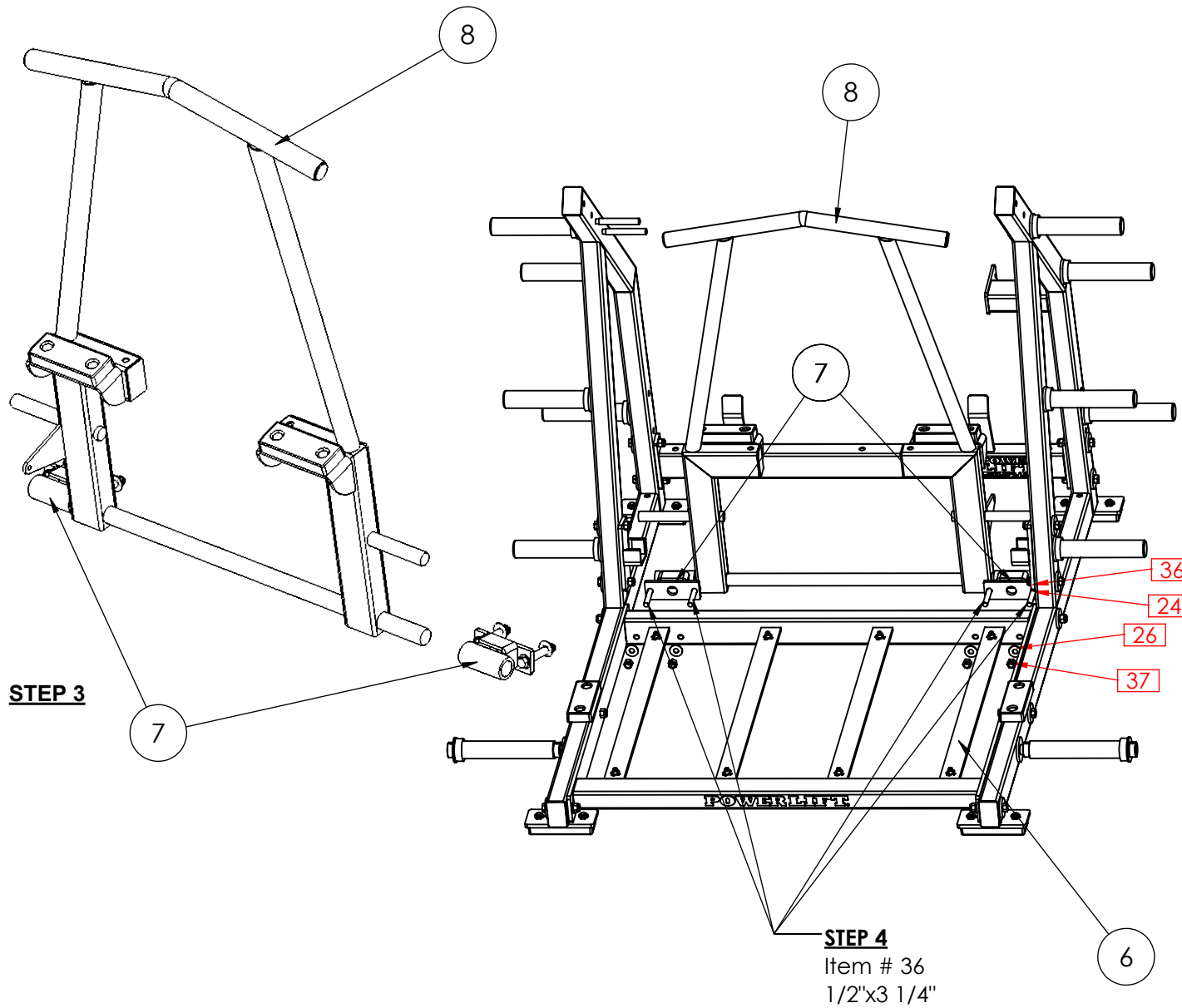
Item No.	Part Number	Part Name	Qty
2	71004	BELT SQUAT, BOTTOM BRACE	1
6	71016C	BELT SQUAT BOTTOM X-FRAME	1
12	71006C	BELT SQUAT, RIGHT SIDE	1
20	71007C	BELT SQUAT, LEFT SIDE	1

POWER LIFT ®

PART NUMBER
71000D_step1

THE INFORMATION CONTAINED IN THIS DRAWING IS THE SOLE PROPERTY OF POWER LIFT ANY REPRODUCTION IN PART OR WHOLE WITHOUT THE WRITTEN PERMISSION OF POWER LIFT IS PROHIBITED

REV. _____ Date _____



Instructions

3.) Insert item 8 into cylinder portion of items 7.

4.) Assemble items 7, and 8 to item 6 using (4) 1/2"X3-1/4" bolts provided.

Note: When assembling unit DO NOT tighten any fasteners until all components have been bolted together.

Hardware Detail

Item No.	Part Number	Part Name	Qty
36	99648	1/2"X3-1/4" BOLT	4
37	99620	1/2"-13 NUT	4
24	99585	1/2" FLATWASHER	4
26	99526	7/16" FLATWASHER	4

STEP 3

STEP 4

Item # 36
1/2"x3 1/4"

Frame Detail

Item No.	Part Number	Part Name	ASSY/QTY
6	71016C	BELT SQUAT BOTTOM X-FRAME	1
7	71015	BELT SQUAT, PIVOT	2
8	71019C	BELT SQUAT, STOP	1

POWER LIFT ®

PART NUMBER

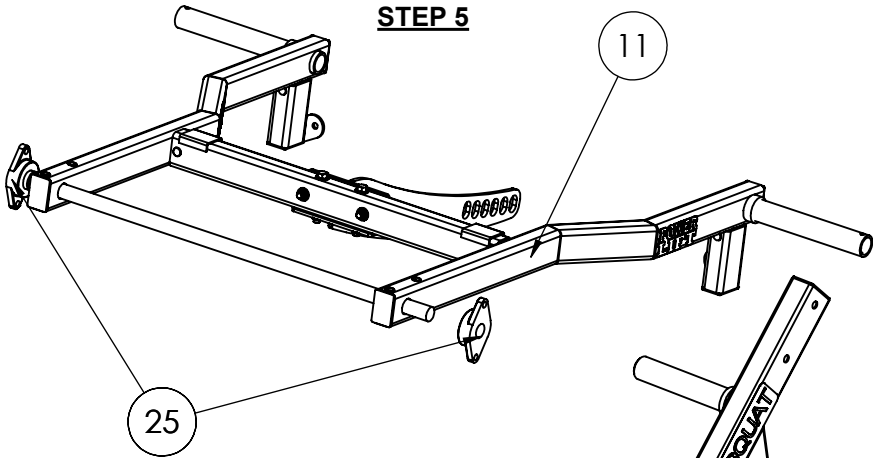
71000D_step2

THE INFORMATION CONTAINED IN THIS DRAWING IS THE SOLE PROPERTY OF POWER LIFT ANY REPRODUCTION IN PART OR WHOLE WITHOUT THE WRITTEN PERMISSION OF POWER LIFT IS PROHIBITED

REV.

Date

STEP 5



Instructions

5.) Place item 25 onto item 11.

6.) Assemble item 11, and 25 to items 12, and 20 using (4) 1/2"X3-1/4" bolts provided.

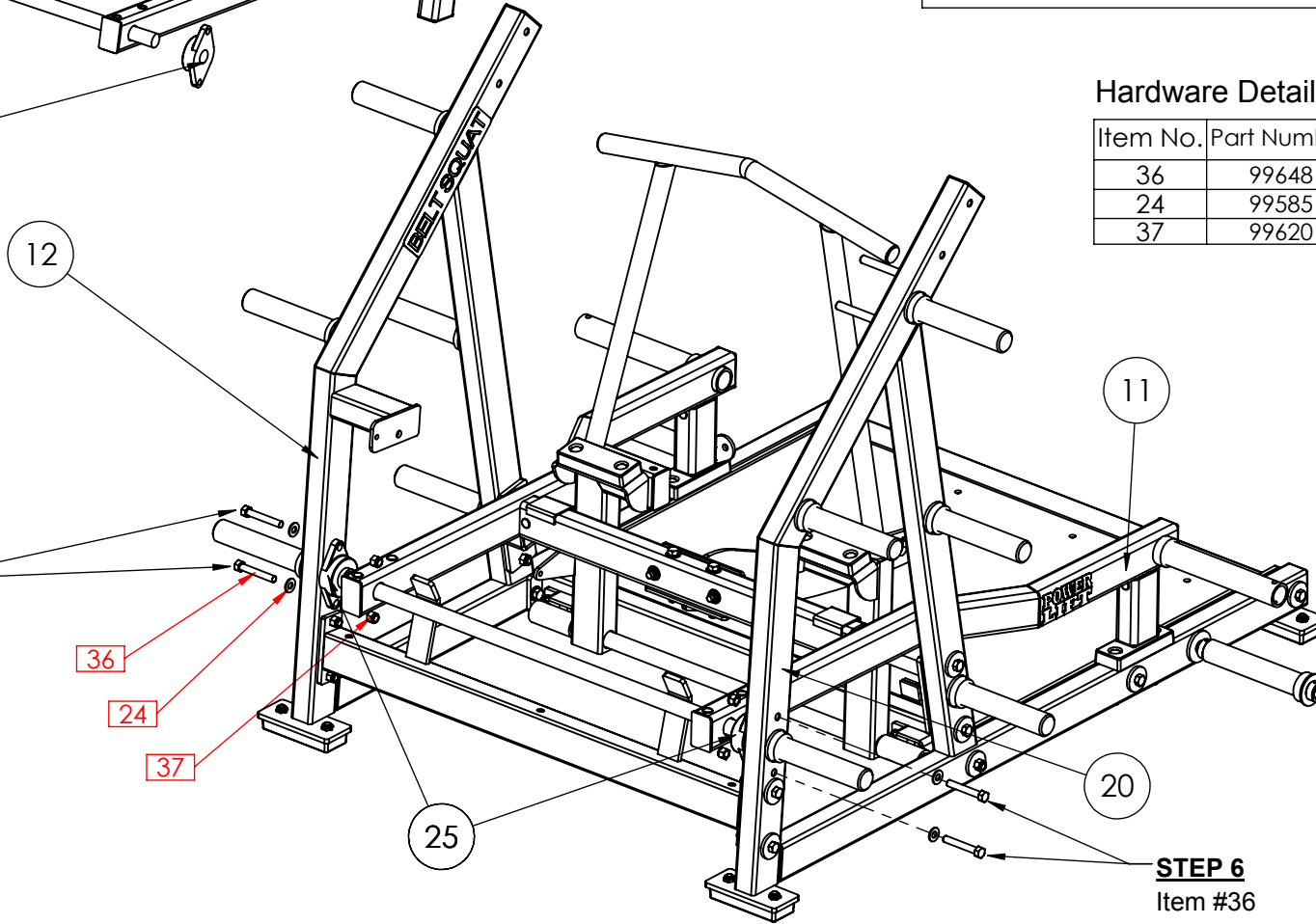
Note: When assembling unit DO NOT tighten any fasteners until all components have been bolted together.

Hardware Detail

Item No.	Part Number	Part Name	Qty
36	99648	1/2"X3-1/4" BOLT	4
24	99585	1/2" FLATWASHER	4
37	99620	1/2"-13 NUT	4

STEP 6

Item # 36
1/2"X3 1/4"



STEP 6

Item #36
1/2"X3 1/4"

Frame Detail

Item No.	Part Number	Part Name	Qty
11	71003D	BELT SQUAT, WORK ARM	1
12	71006C	BELT SQUAT, RIGHT SIDE	1
20	71007C	BELT SQUAT, LEFT SIDE	1
25	99773	BEARING, FOR 1 1/4" SHAFT	2

POWER LIFT ®

PART NUMBER

71000D_step4

THE INFORMATION CONTAINED IN THIS DRAWING IS THE SOLE PROPERTY OF POWER LIFT ANY REPRODUCTION IN PART OR WHOLE WITHOUT THE WRITTEN PERMISSION OF POWER LIFT IS PROHIBITED

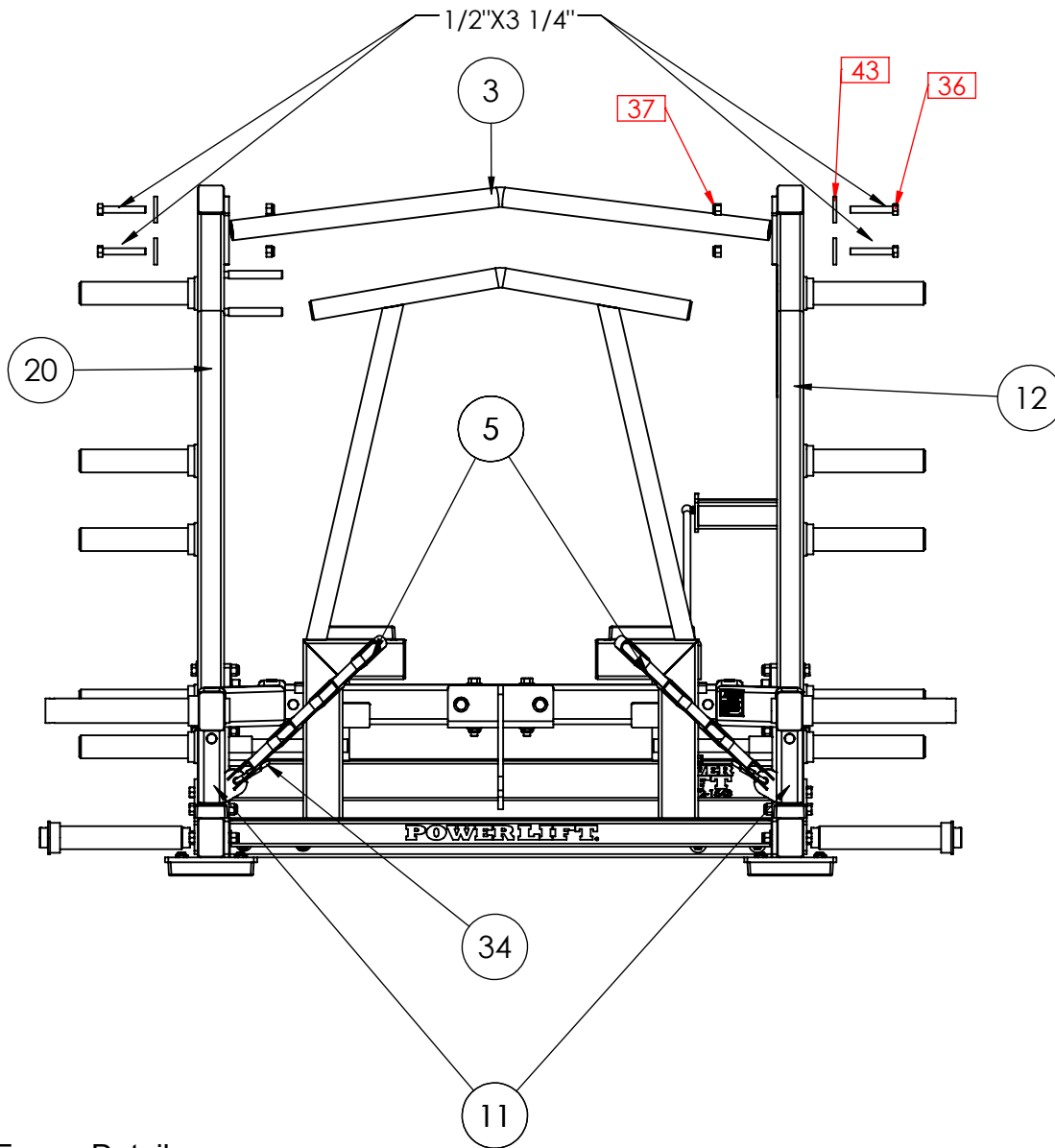
REV.

Date

STEP 7

Item #36

1/2"X3 1/4"



Instructions

7.) Assemble item 3 to item 12, and 20 using (4) 1/2"X3-1/4" bolts provided.

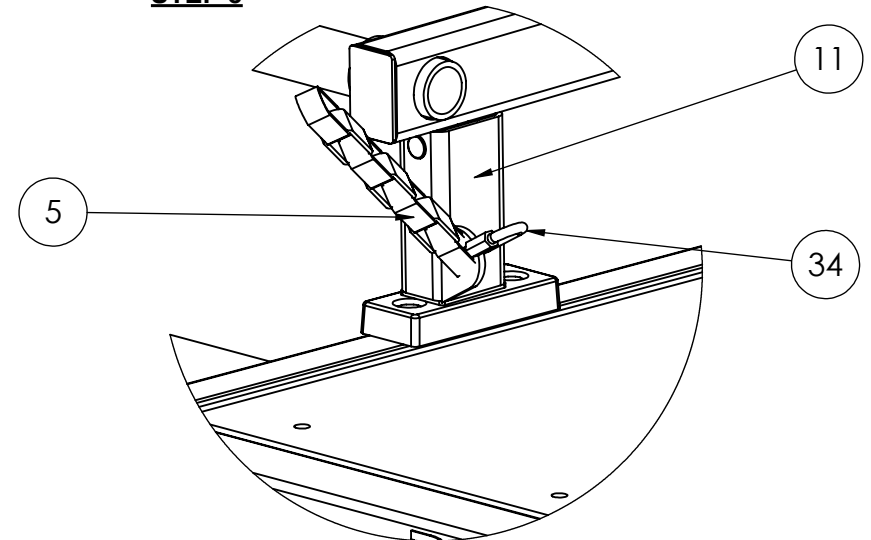
8.) Connect item 5 to 34, then attach item 34 to both sides of item 11.

Note: When assembling unit DO NOT tighten any fasteners until all components have been bolted together.

Hardware Detail

Item No.	Part Number	Part Name	Qty
36	99648	1/2"X3-1/4" BOLT	4
43	80010	PLATE, SPACER	4
37	99620	1/2"-13 NUT	4

STEP 8



Frame Detail

Item No.	Part Number	Part Name	Qty
3	71005	BELT SQUAT HANDLE	1
5	71008	BELT SQUAT, STRAP	2
11	71003D	BELT SQUAT, WORK ARM	1
12	71006C	BELT SQUAT, RIGHT SIDE	1
20	71007C	BELT SQUAT, LEFT SIDE	1
34	99774	THREADED CONNECTOR LINK 5/16"	2

POWER LIFT®

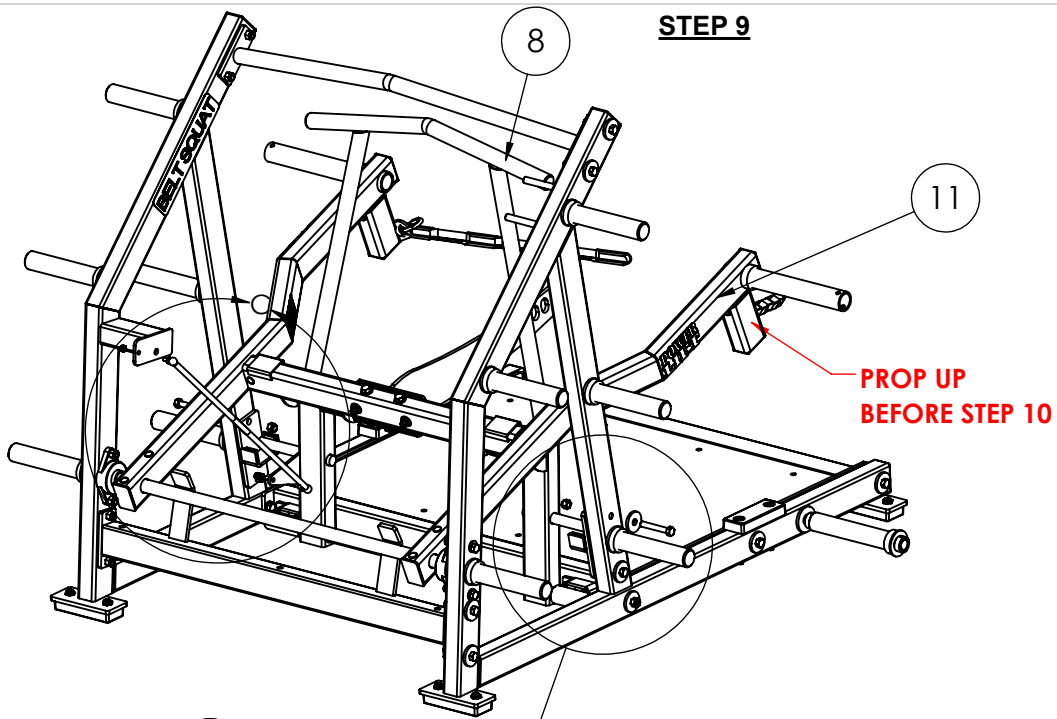
PART NUMBER

71000D_step5

THE INFORMATION CONTAINED IN THIS DRAWING IS THE SOLE PROPERTY OF POWER LIFT ANY REPRODUCTION IN PART OR WHOLE WITHOUT THE WRITTEN PERMISSION OF POWER LIFT IS PROHIBITED

REV.

Date



Instructions

9.) First, prop item 11 up as shown.

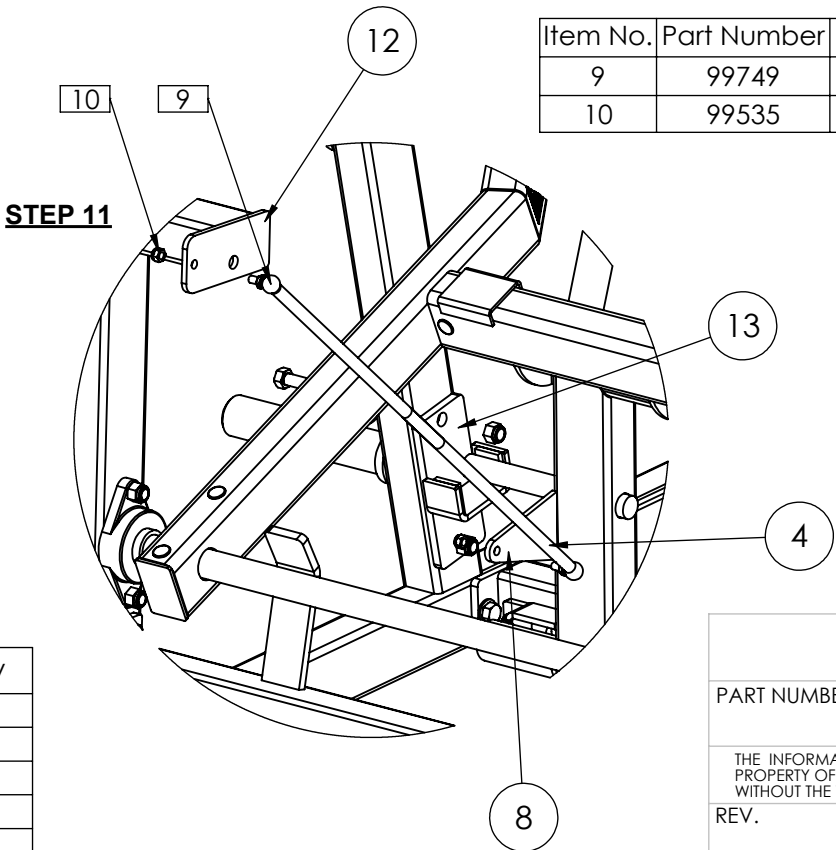
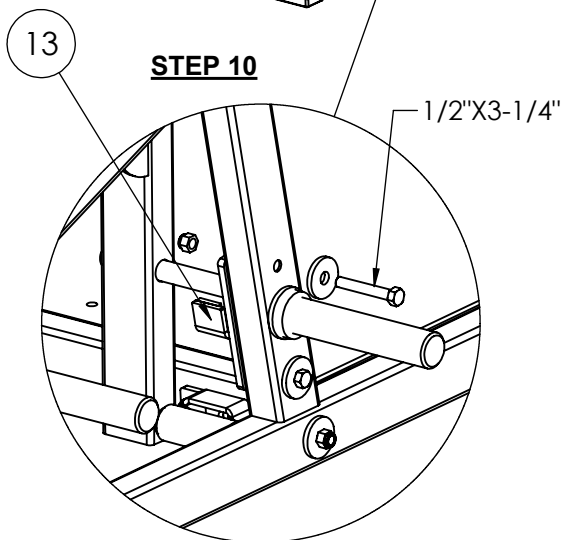
10.) Then remove top bolt from items 13 on both sides to allow it to pivot forward.

11.) Once items 8, and 13 are pivoted forward you may now attach item 4 to both 8, and 12 using (2) .312"-18 nuts provided.

12.) After item 4 is attached, items 13 can be bolted back into place using (2) 1/2"X3-1/4" bolts provided

13.) Once all components have been bolted together, you can now tighten all bolts from the bottom to the top.

14.) Check that item 11 is centered in frame and tighten set screws on bearings (Item # 25).



Hardware Detail

Item No.	Part Number	Part Name	Qty
9	99749	12MM STEEL BALL STUD	2
10	99535	.312"-18, NUT	2

Frame Detail

Item No.	Part Number	Part Name	Qty
4	99466	GAS SPRING, 125 LBS	1
8	71019C	BELT SQUAT, STOP	1
11	71003D	BELT SQUAT, WORK ARM	1
12	71006C	BELT SQUAT, RIGHT SIDE	1
13	71043	BELT SQUAT, RANGE LIMITER	2

POWER LIFT [®]

PART NUMBER
71000D_step6

THE INFORMATION CONTAINED IN THIS DRAWING IS THE SOLE PROPERTY OF POWER LIFT ANY REPRODUCTION IN PART OR WHOLE WITHOUT THE WRITTEN PERMISSION OF POWER LIFT IS PROHIBITED

REV. 4	Date
--------	------